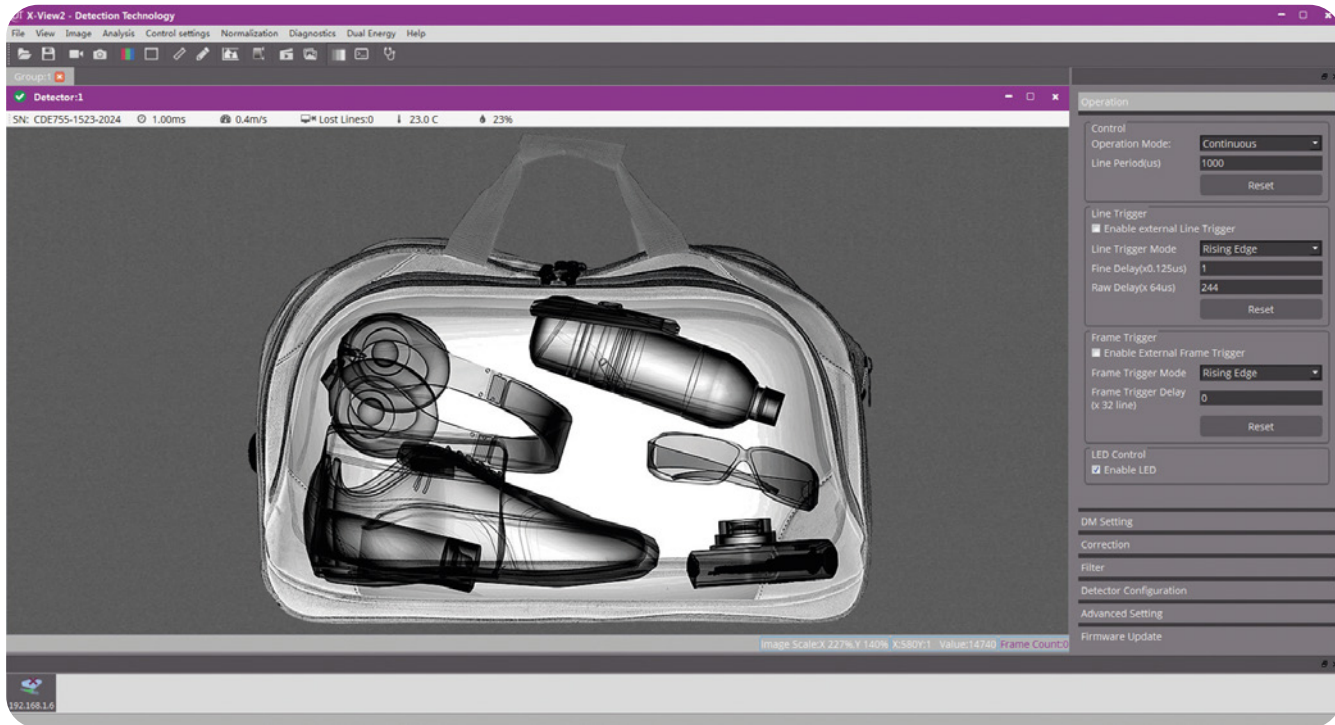


# X-View2

## Software Development Kit



- Control detector parameters
- Grab image data from the detector
- Processing and analyzing of grabbed images
- Multi-detector and multiview support
- Enhanced image analysis tools
- Automatic troubleshooting procedure
- Dual-energy algorithms
- Advanced non-linear calibration
- Working modes:
  - Gigabit Ethernet
  - Camera link

**X-View2** Software Development Kit is software for controlling all the digital platform detectors of DT. It provides easy-to-use and easy-to-learn user interface for detector controlling and image grabbing.

X-View2 application software supports multi-detector and multiview systems. Multiple image enhancement functions of X-View2 enable fast and easy processing of the grabbed images. Simplified automatic troubleshooting procedure significantly shortens the time needed or equipment maintenance.



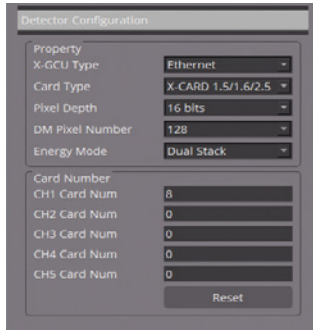
## X-View2 SDK includes

- X-View2 software
- X-Lib demonstration software with source code
- X-Lib software library

## Supported DT Detector subsystems

- Aurora X-Cards with X-GCU
- X-DCB2 data combiner unit
- X-Scan Series with X-GCU or X-DCB2

# Key features



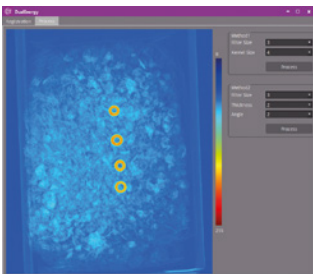
## Detector configuration

- Easy to set detector module configuration in each X-GCU channel
- Set gain values and test pattern mode of each detector module
- Read properties of detector modules



## Image analysis

- Pixel analysis for rows and columns
- Noise and average values
- Minimum and maximum values



## Dual-energy process

- Two dual-energy combination methods that adopt different algorithms
- Based on effective atomic number (Zeff) or on contrast differences



## Troubleshooting

- Automated troubleshooting procedure
- View detector information
- Analyze offset image
- Analyze air-scan image
- Analyze corrected image
- Automatic generation of diagnostics report, including sample images

Detector	Unit	SNR	SNR2	SNR3	SNR4	SNR5	SNR6	SNR7	SNR8	SNR9	SNR10
DM02	2.48	21.87	5.25	1.20	5.05	2.80	4.11	51.18	28		
DM03	2.45	21.82	5.26	1.22	5.04	2.78	4.11	51.18	28		
DM04	2.47	21.85	5.24	1.20	5.05	2.80	4.11	51.18	28		
DM05	2.46	21.83	5.24	1.20	5.05	2.80	4.11	51.18	28		
DM06	2.46	21.85	5.27	1.19	5.05	2.80	4.11	51.18	28		
DM07	2.45	21.84	5.26	1.19	5.04	2.79	4.11	51.18	28		
DM08	2.46	21.84	5.26	1.19	5.04	2.79	4.11	51.18	28		
DM09	2.46	21.84	5.27	1.20	5.05	2.80	4.11	51.18	28		
DM10	2.46	21.84	5.26	1.19	5.04	2.79	4.11	51.18	28		
DM11	2.46	21.87	5.25	1.20	5.05	2.79	4.11	51.18	28		
DM12	2.45	21.82	5.24	1.19	5.04	2.79	4.11	51.18	28		
DM13	2.46	21.84	5.27	1.20	5.04	2.79	4.11	51.18	28		
DM14	2.47	21.83	5.25	1.19	5.04	2.79	4.11	51.18	28		

## Health check

- Voltage, humidity and temperature check of each X-GCU control unit and Digital
- X-Card detector modules

# System requirements

## Supported operating systems

- Windows 7/10 (32/64-bit), Ubuntu 18.04/20.04 (32/64-bit), Debian 8/9/10 and CentOS7

## Supported compilers

- Microsoft Visual C++ 2010/2013/2015/2017
- Microsoft Visual C# 2010/2013/2015/2017, GCC 4.6