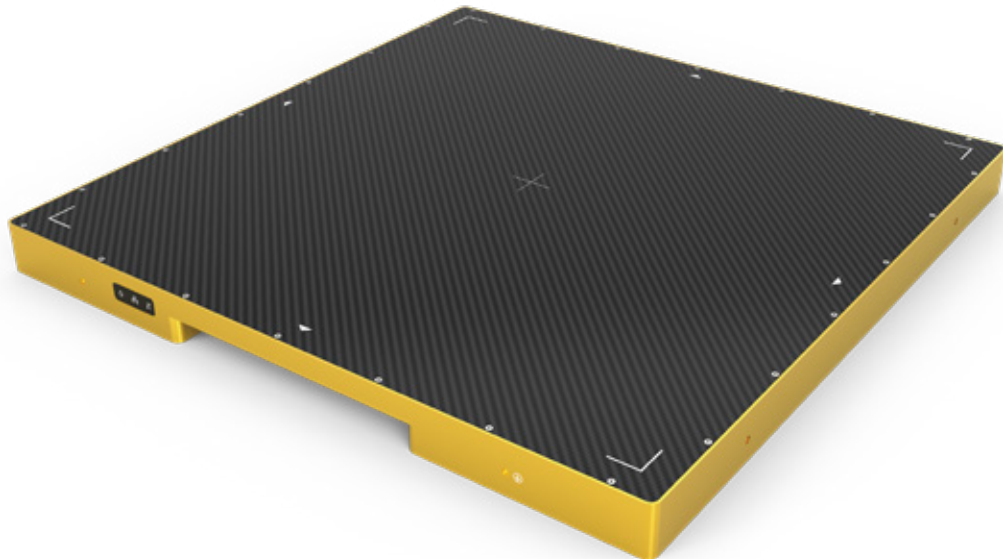


X-PANEL[®] 4343a FQI-XM



a-Si-TFT X-ray flat panel detector



Key features

- Technology a-Si-TFT
- Pixel pitch 100 μm
- Pixel matrix 4288 x 4288
- Active area 430 x 430 mm
- Energy range 40~350 kV
- Interface Optical Fiber
- Frame rate 8 fps (1x1) / 15 fps (2x2)

Applications

- Casting, pipe welding, pressure container, industrial CT, battery inspection



X-Panel 4343a FQI-XM is a 43 x 43cm fixed type and low noise X-ray flat panel detector based on a-Si technology that features excellent sensitivity and high dynamic range modes among other benefits.

X-Panel 4343a FQI-XM has good image quality and a large dynamic range. It is an optimal solution in casting, pipe welding, pressure container, industrial CT, battery inspection applications.

Technical Specifications

Technology	
Sensor	a-Si
Scintillator	CsI
Active area	430 x 430 mm
Pixel matrix	4288 x 4288
Pixel pitch	100 µm
ADC	16 bits

Interface	
Data interface	Optical Fiber
Exposure control	Pulse sync in/ Pulse sync out
Frame rate	8 fps (1x1) / 15 fps (2x2)
Operating system	Windows10 / Windows11 OS 32 bits or 64 bits

Mechanics	
Dimensions (H x W x D)	470 x 470 x 34.5 mm
Weight	15 kg
Sensor protection	Carbon fiber
Housing material	Aluminum alloy

Power	
Supply	100~240 VAC
Frequency	50/60 Hz
Consumption	24 W

Environmental	
Temperature range	10~40°C (operating); -20~50°C (storage)
Humidity	30~75% RH (non-condensing)
Vibration	IEC 60068-2-64: 5-500Hz (1 Grms), X, Y, Z axis, each axis 30min (operating)
Shock	IEC 60068-2-27: 2G, duration 11ms , 200 shocks in 6 directions (operating)
IP rating	IPX0

Performance	
Resolution	5.0 lp/mm
Energy range	40~350KV
Dynamic range	≥76 dB

X-Panel 4343a FQI-XM outline

