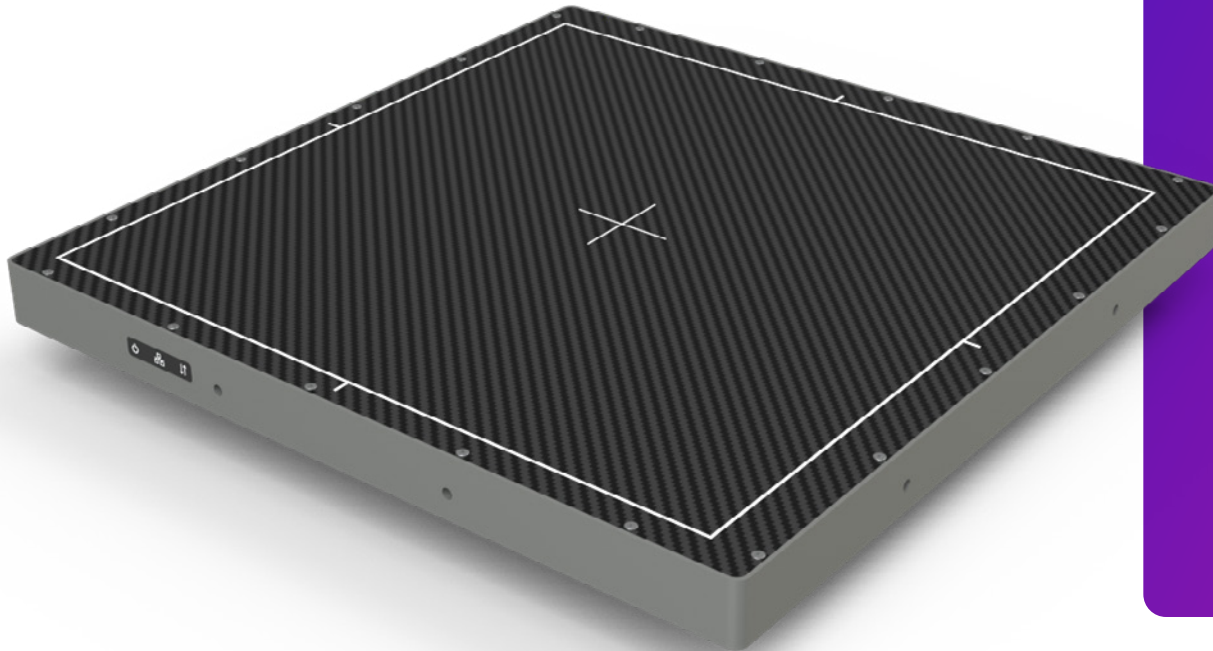


X-PANEL[®] 3030a FPI-M

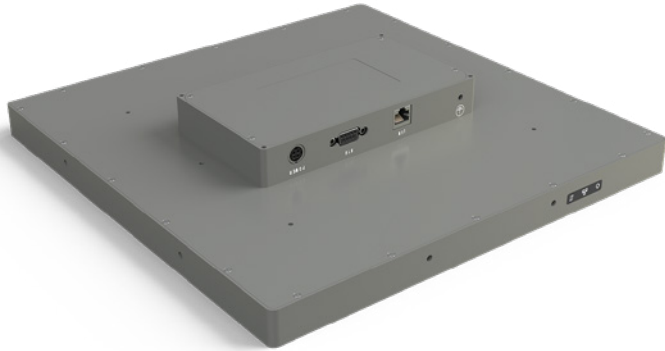


Fixed a-Si-TFT X-ray flat panel detector



Key features

- **Technology** a-Si-TFT
- **Pixel size** 140 μm
- **Pixel matrix** 2048 x 2048
- **Pixel area** 286 x 286 mm
- **Energy range** 40–350 kV
- **Interface** Optical fiber
- **Frame rate** 18 fps (1x1)
- **Application** Industrial NDT
Digital radiography (DR)
Computed tomography (CT)



X-Panel 3030a FPI-M is a fixed type and low noise X-ray flat panel detector optimized for industrial non-destructive testing (NDT), digital radiography (DR) and computed tomography (CT) applications. It is based on amorphous silicon (a-Si) technology that features a high dynamic range and a long lifetime among other benefits.

X-Panel 3030a FPI-M has good image quality and a large dynamic range. Furthermore, it comes with multiple gain modes, that make it compatible with both high sensitivity and large dynamic range requirements.

Technical specifications

| Technology | |
|---------------|--------------|
| Sensor | a-Si-TFT |
| Scintillator | GOS / CSI |
| Active area | 286 x 286 mm |
| Pixel matrix | 2048 x 2048 |
| Pixel pitch | 140 µm |
| AD conversion | 16 bits |

| Interface | |
|-------------------------|---|
| Communication interface | Optical fiber |
| Exposure control | Pulse sync in (Edge or level) / Pulse sync out (Edge or level) |
| Work mode | Software mode / HVG sync mode / FPD sync mode |
| Frame speed | 18 fps (1x1) |
| Operating system | Windows7 / Windows10 OS 32 bits or 64 bits |

| Mechanical | |
|----------------------------|---------------------|
| Dimensions (HxWxD) | 322 x 322 x 50.5 mm |
| Weight | 7 kg |
| Sensor protection material | Carbon fiber |
| Housing material | Aluminum alloy |

| Power | |
|-------------|-------------|
| Supply | 100~240 VAC |
| Frequency | 50/60 Hz |
| Consumption | 10 W |

| Environmental | |
|---------------------------|---|
| Temperature range | 10~35°C (operating); -10~50°C (storage) |
| Humidity | 30~70% RH (non-condensing) |
| Vibration | IEC/EN 60721-3 class 2M3 (10~150 Hz, 0.5 g) |
| Shock | IEC/EN 60721-3 class 2M3 (11 ms, 2 g) |
| Ingress protection rating | IP41 |

| Technical performance | |
|-----------------------|---------------------|
| Resolution | 3.5 lp/mm |
| Energy range | 40~350 kV |
| Lag | <0.8% @1st frame |
| Dynamic range | ≥86 dB |
| Sensitivity | 620 lsb/uGy |
| SNR | 49 dB @ (20000 lsb) |
| MTF | 72% @ (1 lp/mm) |
| | 44% @ (2 lp/mm) |
| | 25% @ (3 lp/mm) |
| DQE (2uGy) | 66% @ (0 lp/mm) |
| | 42% @ (1 lp/mm) |
| | 28% @ (2 lp/mm) |

X-Panel 3030a FPI-M outline

