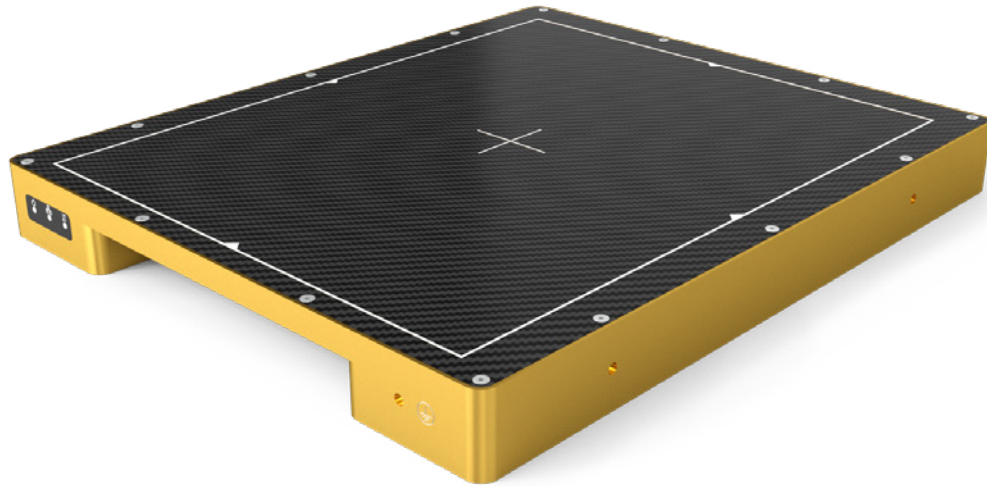


# X-PANEL<sup>®</sup> 2530a FQI-XM



Fixed a-Si-TFT X-ray flat panel detector

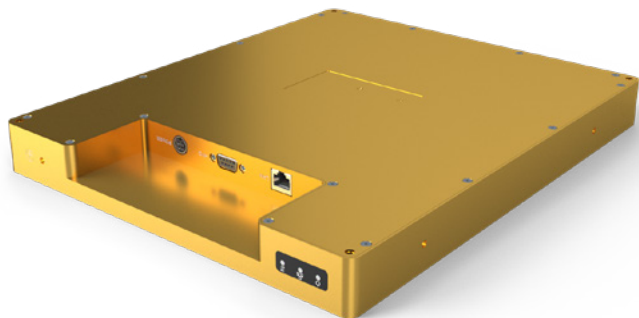


## Benefits

- Robust design for 24/7 Industrial operations
- High speed and large field of view
- Easy to use and integrate
- Versatile configurations
- Adaptive imaging

## Key features

- **Technology** a-Si-TFT
- **Pixel size** 100  $\mu$ m
- **Pixel matrix** 2432 x 3072
- **Pixel area** 243 x 307 mm
- **Energy range** 40–350 kV
- **Interface** 2.5G Ethernet
- **Frame rate** 12 fps (1x1) / 24 fps (2x2)



Introducing the **X-Panel 2530a FQI-XM**, a robust flat panel detector designed for 24/7 industrial operations. With its durable and stable build, this cutting-edge detector excels in high-performance speed and resolution, ideal for industries requiring swift and precise imaging.

The X-Panel 2530a FQI-XM stands out with its ease of use, ensuring seamless integration for professionals and newcomers alike. This flat panel detector streamlines operations, providing a hassle-free experience for users of all expertise levels.

Emphasizing versatility, the X-Panel 2530a FQI-XM offers configurable options and adaptive imaging. Tailor the detector to meet your application's specific needs, adjusting configurations for optimal results. This adaptability positions the X-Panel 2530a FQI-XM as a versatile solution for various industrial imaging scenarios.

## Technical specifications

Technology	
Sensor	a-Si-TFT
Scintillator	CSI / GOS
Active area	243 x 307 mm
Pixel matrix	2432 x 3072
Pixel pitch	100 µm
AD conversion	16 bits

Interface	
Communication interface	2.5G Ethernet
Exposure control	Trigger in (edge or level) / Trigger out (edge or level)
Frame speed	12 fps (1 x 1) / 24 fps (2 x 2)
Image acquisition time	30 fps
Operating system	Windows7 / Windows10 OS 32 bits or 64 bits

Mechanical	
Dimensions (HxWxD)	343 x 286 x 34.5 mm
Weight	6.9 kg
Sensor protection material	Carbon fiber
Housing material	High strength aluminum alloy

Power	
Supply	100~240 VAC
Frequency	50/60 Hz
Consumption	12 W

Environmental	
Temperature range	10~35°C (operating); -10~50°C (storage)
Humidity	30~70% RH (non-condensing)
Vibration	IEC/EN 60721-3 class 2M3 (10~150 Hz, 0.5 g)
Shock	IEC/EN 60721-3 class 2M3 (11 ms, 2 g)
Ingress protection rating	IP41

Technical performance	
Resolution	5.0 lp/mm
Energy range	40~350 kV
Lag	<0.8% @1st frame
Dynamic range	≥76 dB
Sensitivity	360 lsb/uGy
SNR	47 dB (20000lsb)
	75% @ (1 lp/mm)
MTF	75% @ (1 lp/mm)
	48% @ (2 lp/mm)
	29% @ (3 lp/mm)
DQE	64% @ (0 lp/mm)
	38% @ (1 lp/mm)
	21% @ (2 lp/mm)

## Applications

- Battery inspection
- In-line DR & CT

# Product outline

